



Status Update on IRWM, and Measure W Programs

Santa Clarita Valley Groundwater
Sustainability Agency
July 6, 2020
Item 3.4

Background

- Last update to SCV GSA Board January 2020
 - Inter relationships with IRWM, Measure W (Safe Clean Water Program), and the GSA
 - For those who don't spend a lot of time on these, it can be confusing
- Big Picture
 - 3 different programs/all have keen interest in stakeholder engagement
 - Some overlap in boundaries
 - Some overlap in types of projects pursued
- Regular updates to SCV-GSA are being provided

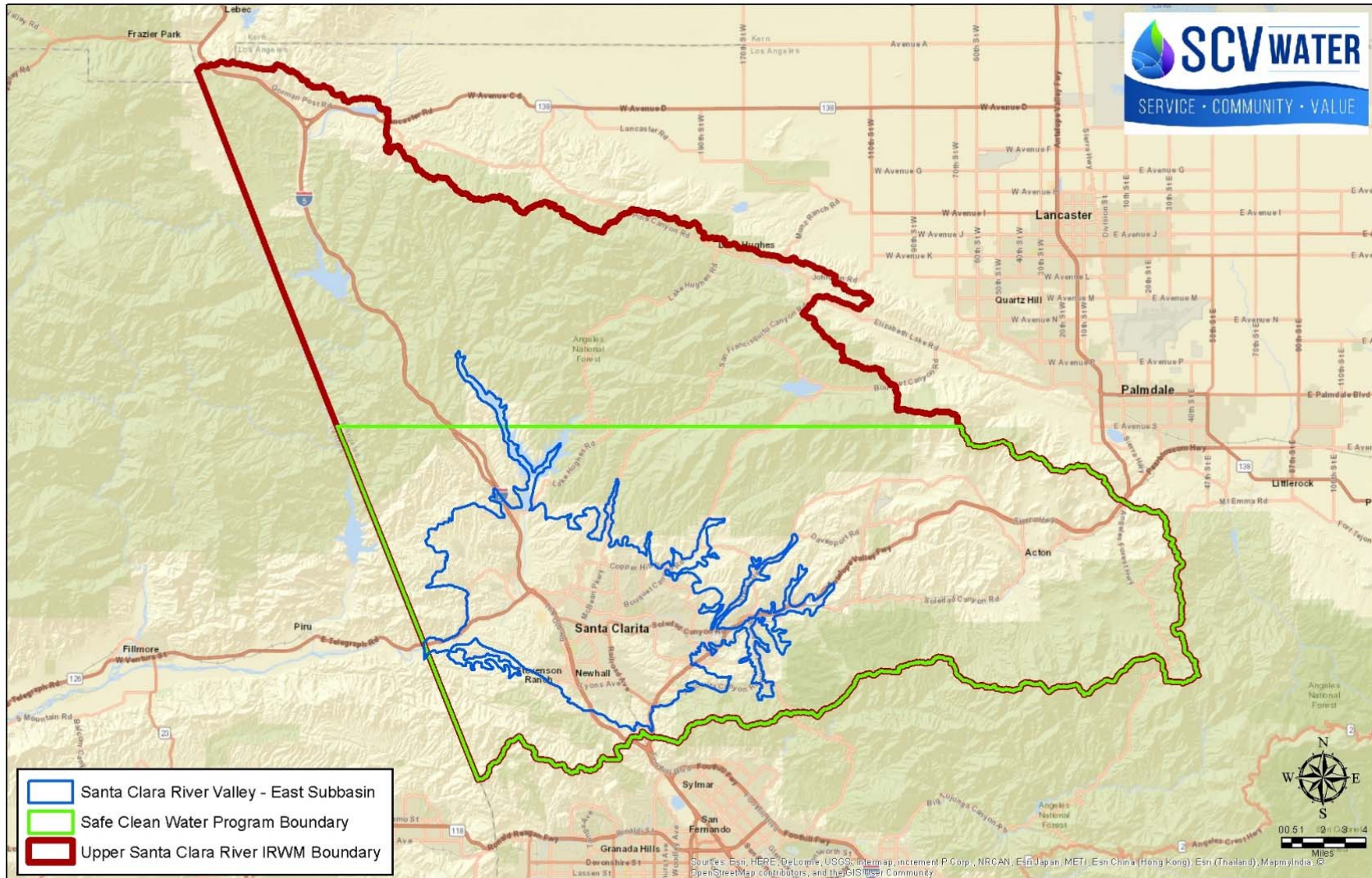
Background- Programs

- SCV-GSA- Agency creation required by State, Governed by JPA, Funded by Member Agencies and Grants, broad authority
 - Objective: Develop a GSP, operate basin sustainably.
- IRWM- Program voluntary, but created/required by State to pursue IRWM grant funds, Governed by MOU, Funded by member agencies, limited authority
 - Objective: Pursue IRWM specific funding locally

Background- Programs

- Measure W (Safe Clean Water Program)
 - Created by LA County, three committees administer the program. Overseen by County Board of Supervisors, funded via parcel tax.
 - Authority includes assessment of a special parcel tax, operation of committees.
 - Objective: review projects and award funding

Program Area Geography



Program Updates

- SCV GSA
 - obtained a R3 grant of ~\$890K to offset member agency costs to develop the GSP.
 - Engaged with downstream entities to explore Watershed Coordinator Grant funding
- Upper Santa Clara River IRWM received a draft award of \$10.6M for this region.
 - State is expected to render final award in July 2020
- Measure W
 - Stormwater Implementation Plan completed
 - Two projects and one study recommended for funding



Existing Alignment

- Areas of Alignment
 - R2 and R3 GSA grants allow for special study on groundwater recharge
 - Upper Santa Clara River IRWM- Draft Prop 1 IRWM award
 - One City-led and one County-led stormwater infiltration project
 - Santa Clara River Conservancy and City of Santa Clarita led Arundo Removal Project
 - Measure W
 - Additional funding for the County led stormwater infiltration project mentioned above
 - New funding for a City Stormwater Infiltration project

Potential Future Alignment

- Grant funded Watershed Coordinator
 - Coordinate GSA activities (mainly post GSP)
 - Some coordination with IRWM and Measure W during GSP implementation.
- SCV GSA support of groundwater recharge projects, and Arundo removal project(s) in its GSP
- USCR IRWM
 - Additional Stormwater Infiltration projects and Arundo removal projects.
- Measure W
 - New rounds of projects, likely related to stormwater infiltration.

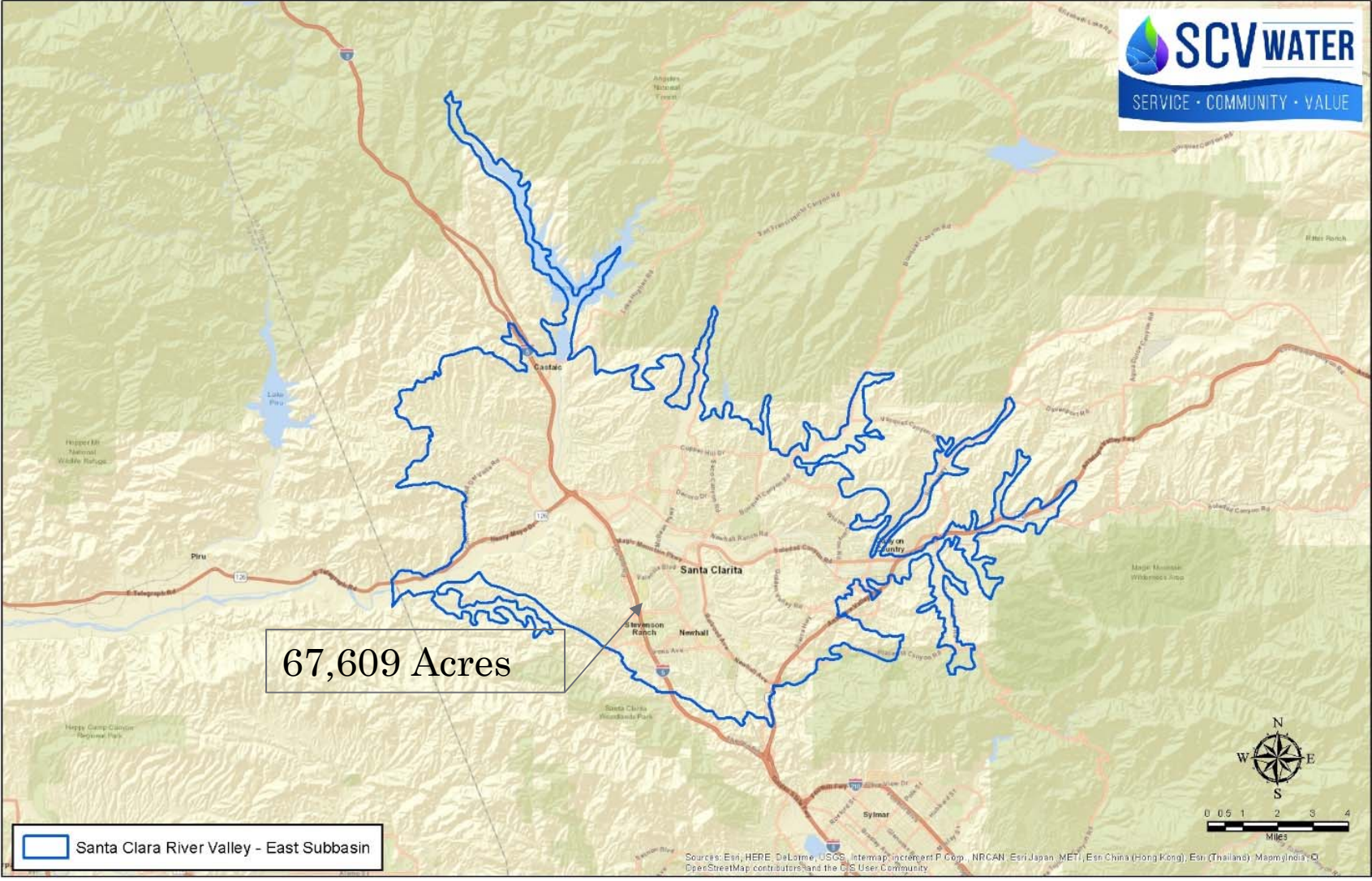
Questions/Discussion

SCV

GSA



SCV-GSA



Groundwater Sustainability Agency and SCV-GSA

- Governance/Authority
 - SCV-GSA governed via a Joint Powers Authority. Separate agreement allows for admin and GSP development
 - State provides significant authority to GSAs should they choose to use it. For example: setting rules, regulations, collecting fees, enforcement

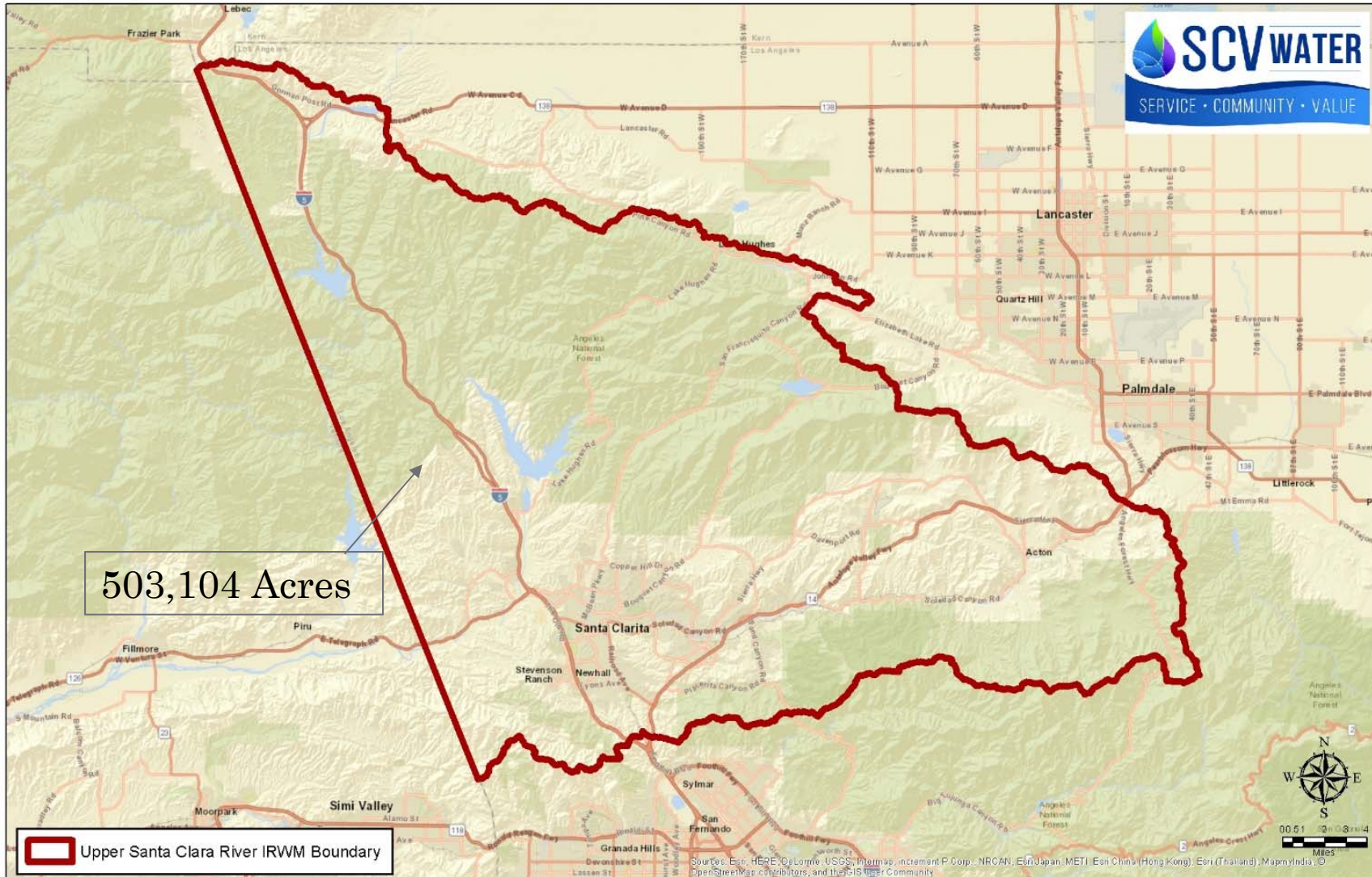
Groundwater Sustainability Agency and SCV-GSA

- Funding and Cost Considerations
 - Minimum member agency contributions of \$20K per year
 - Additional significant contributions by SCV Water
 - Grant revenue (Round 2 SGM~\$416K, Round 3 grant request submitted~\$890K)
 - SCV Water staff costs in 18/19 were approximately \$80,000*

Groundwater Sustainability Agency and SCV-GSA

- Approach for Projects
 - In GSP development, projects and management actions to achieve sustainability over the 20 year implementation horizon will be identified.
 - Projects limited to those that help achieve sustainability, i.e., groundwater recharge, etc.

USCR IRWM



Integrated Regional Water Management and USCR IRWM

- Governance/Authority
 - USCR IRWM Planning Area governance is through the Regional Water Management Group (formed by MOU).
Members: SCV Water, City of Santa Clarita, LA County Flood Control, Santa Clarita Valley Sanitation District, San Gabriel Rivers and Mountains Conservancy.
- Authority limited to Plan development and implementation.

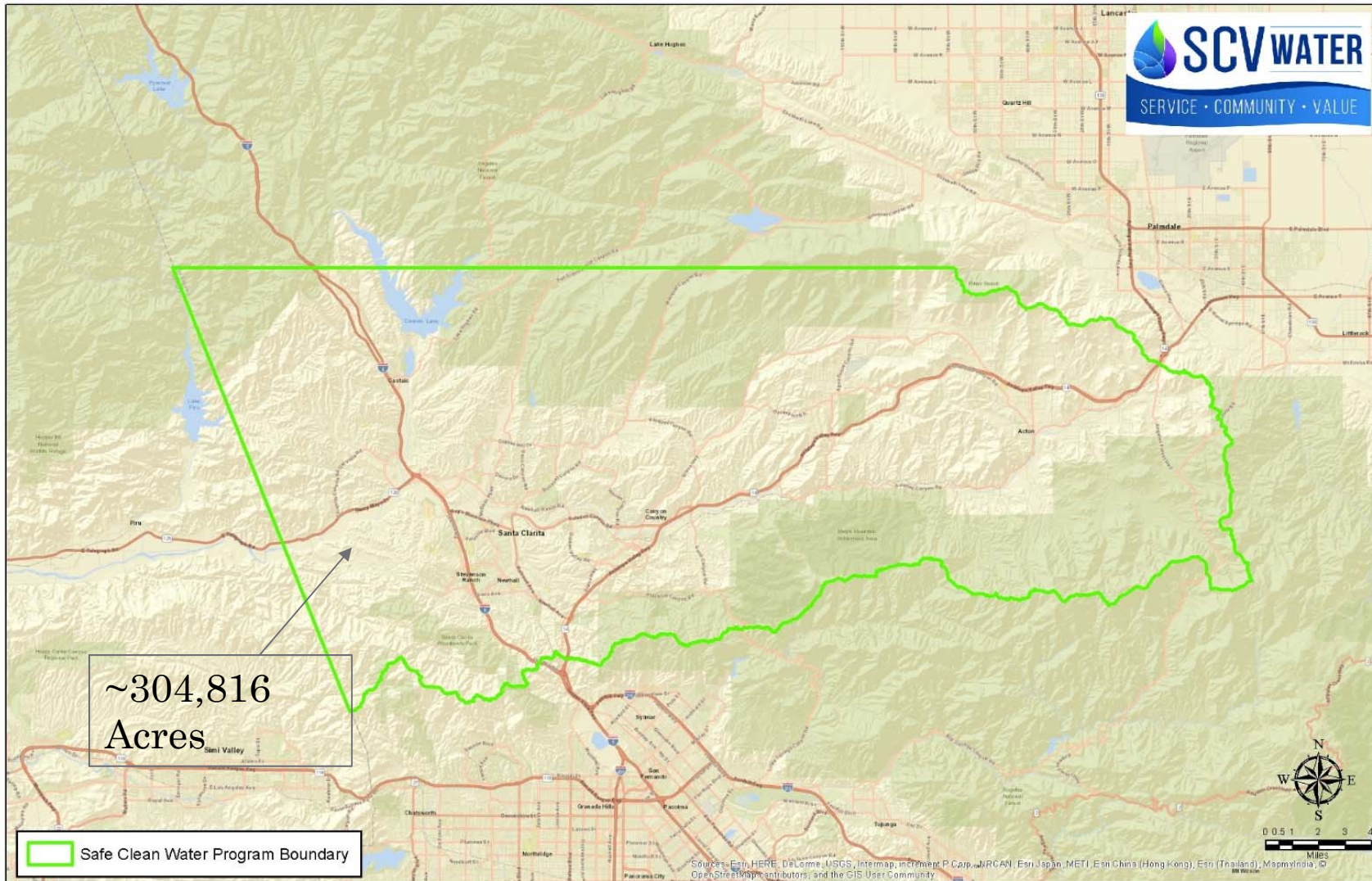
Integrated Regional Water Management and USCR IRWM

- Funding and Cost Considerations
 - Plan not required by law, but required for seeking certain grant funds.
 - SCV Water provides support by leading the program administration, providing the Chair, and providing contracting services.
 - City provides support as the PM for the DAC Involvement Program.
 - Member agencies provide funds on an ad hoc basis for plan updates and grant applications.

Integrated Regional Water Management and USCR IRWM

- Approach for Projects
 - Broadest approach exists within IRWM Planning. Local plan contains ~60 ideas. Without ongoing funding for all projects, focus is on projects fundable via grants.
 - Each grant cycle:
 - IRWM plan is reviewed for compliance with the state's current IRWM Plan standards
 - Projects reviewed for meeting grant requirements.
 - Then.... final selections are made and application prepared.

Watershed Area Steering Committee- Santa Clara River



Measure W

- Governance/Authority
 - WASC, Scoring Committee, Regional Oversight Committee
 - Each WASC has up to 17 members
 - 7 municipal, 5 agency, water agency/GSA, sanitation district, municipal parks/open space, 5 community stakeholder members.
 - SCV-GSA has a seat on this committee
 - Scoring Committee
 - Regional Oversight Committee

Measure W

- Authority includes ability for Los Angeles County assess and collect a special parcel tax, operate committees, review projects, and award funding.

Measure W

- Funding and Cost Considerations
 - Local estimate of Regional Program revenue is \$6.0M, and Municipal is 3.3M.
 - Flood Control District-wide max estimated annual revenue is \$285M. Actual revenue anticipated to be somewhat less due to tax appeals and “credits”
 - 50% funds to Regional Program
 - 40% funds to Municipal Program
 - 10% funds to Flood Control District program

Measure W

- Approach for Projects
 - WASC's Stormwater Implementation Plan (SIP) is the building block of project identification and selection. Majority of SIP funding will be for stormwater compliance, but funds can be requested for technical resources and studies.
 - Final scoring of SIP projects is prepared by the Scoring Committee.

Potential Confusion of Programs

- Separate programs
 - different approaches to funding and governance
 - share same agencies and staff
 - share certain similar goals, ideas, and project types
 - Arundo removal, stormwater, etc.
- Can be confusing to stakeholders who want to better understand and engage in one or more program.

Alignment Considerations

- Areas of Alignment
 - R2 and R3 GSA grants allow for special study on groundwater recharge
 - Upper Santa Clara River IRWM- Draft Prop 1 IRWM award
 - One City led and one County led stormwater infiltration project
 - A Santa Clara River Conservancy and City of Santa Clarita led Arundo Removal Project
- Measure W
 - Additional funding for the County led stormwater infiltration project mentioned above
 - New funding for a City Stormwater Infiltration project

Alignment Considerations

- Potential Future Areas of Alignment
 - Possible new grant between the upper and lower watersheds to provide for a watershed coordinator to help with GSA activities.
 - SCV GSA support of groundwater recharge projects, and Arundo removal project(s) in its GSP
 - USCR IRWM
 - Additional Stormwater Infiltration projects and Arundo removal projects
 - Measure W
 - New rounds of projects, likely related to stormwater infiltration.

Comparison Table

	GSA	IRWM	Measure W
Background/Local Considerations/ Service Area	2014. Regulation	2002. Creation of non regulatory program	2018. Special Tax and new program
Governance/ Authority	Joint Powers Authority/ Significant Authorities Available.	MOU- Regional Water Management Group/Authority Limited to Plan Development and Implementation	Several Committees overseen by County BoS/ Authority to collect and distribute tax revenue.

Comparison Table

	GSA	IRWM	Measure W
Funding and Cost Considerations	Member contributions, plus additional SCV Water contributions. Grant Revenue.	SCV Water funds administration and serves as Chair. DAC increased staff time. Member agencies fund ad hoc work	Parcel tax considered dependable revenue, but will fluctuate some SCV Water staff time currently low.
Approach for Projects (all include some component of stakeholder involvement)	Linked to GSP development.	Very broad, but filtered for grant opportunities	Linked to stormwater compliance