



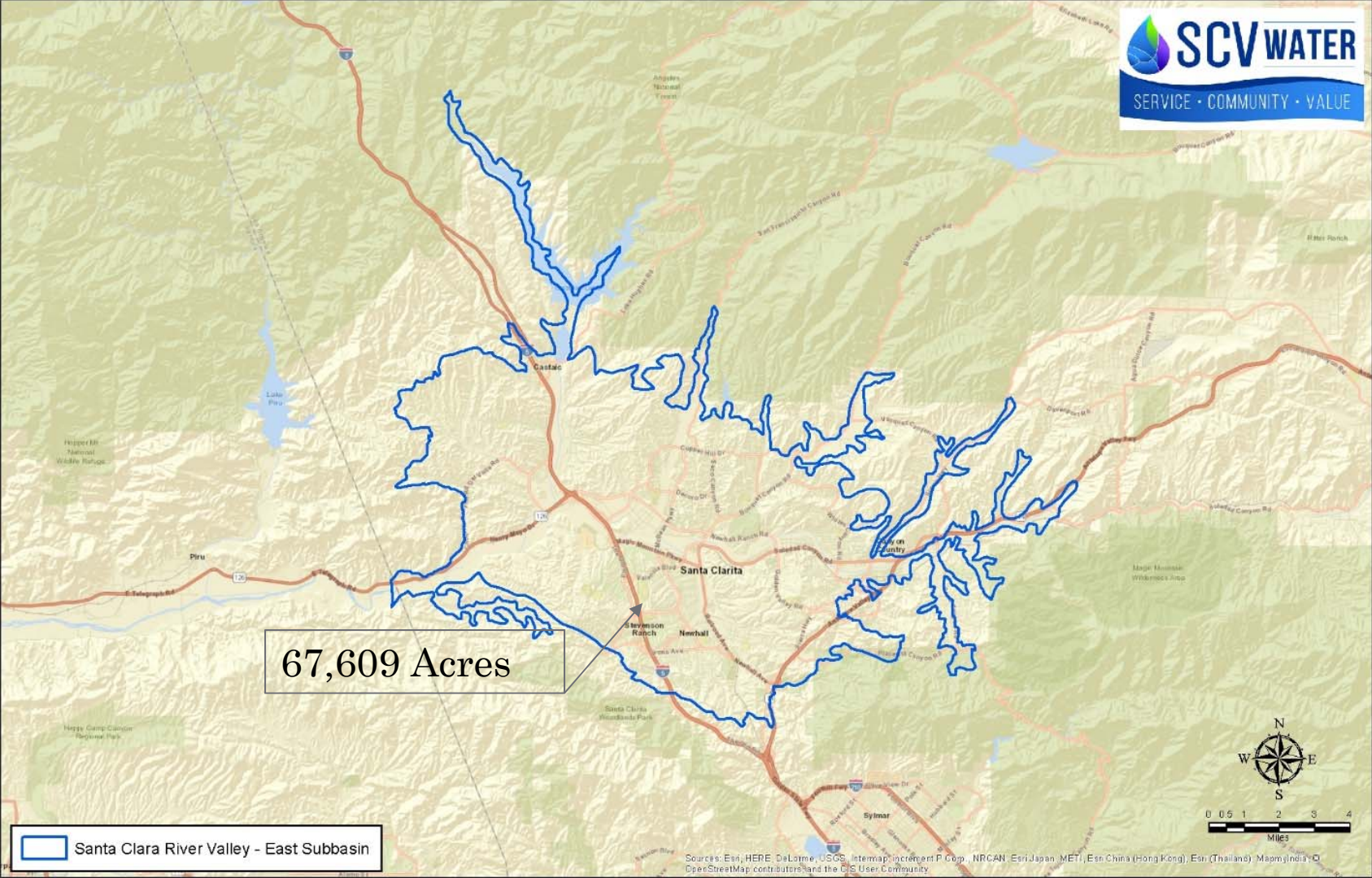
GSA, IRWM, and Measure W Programs

Santa Clarita Valley Groundwater
Sustainability Agency
January 6, 2020
Item 4.2

Introduction

- Additional clarity on program interrelationships.
- Program slide format:
 - Area map with background/Local Considerations/Service Area
 - Governance/Authority
 - Funding and Cost Considerations
 - Approach for Projects

SCV-GSA



Groundwater Sustainability Agency and SCV-GSA

- Governance/Authority
 - SCV-GSA governed via a Joint Powers Authority. Separate agreement allows for admin and GSP development
 - State provides significant authority to GSAs should they choose to use it. For example: setting rules, regulations, collecting fees, enforcement

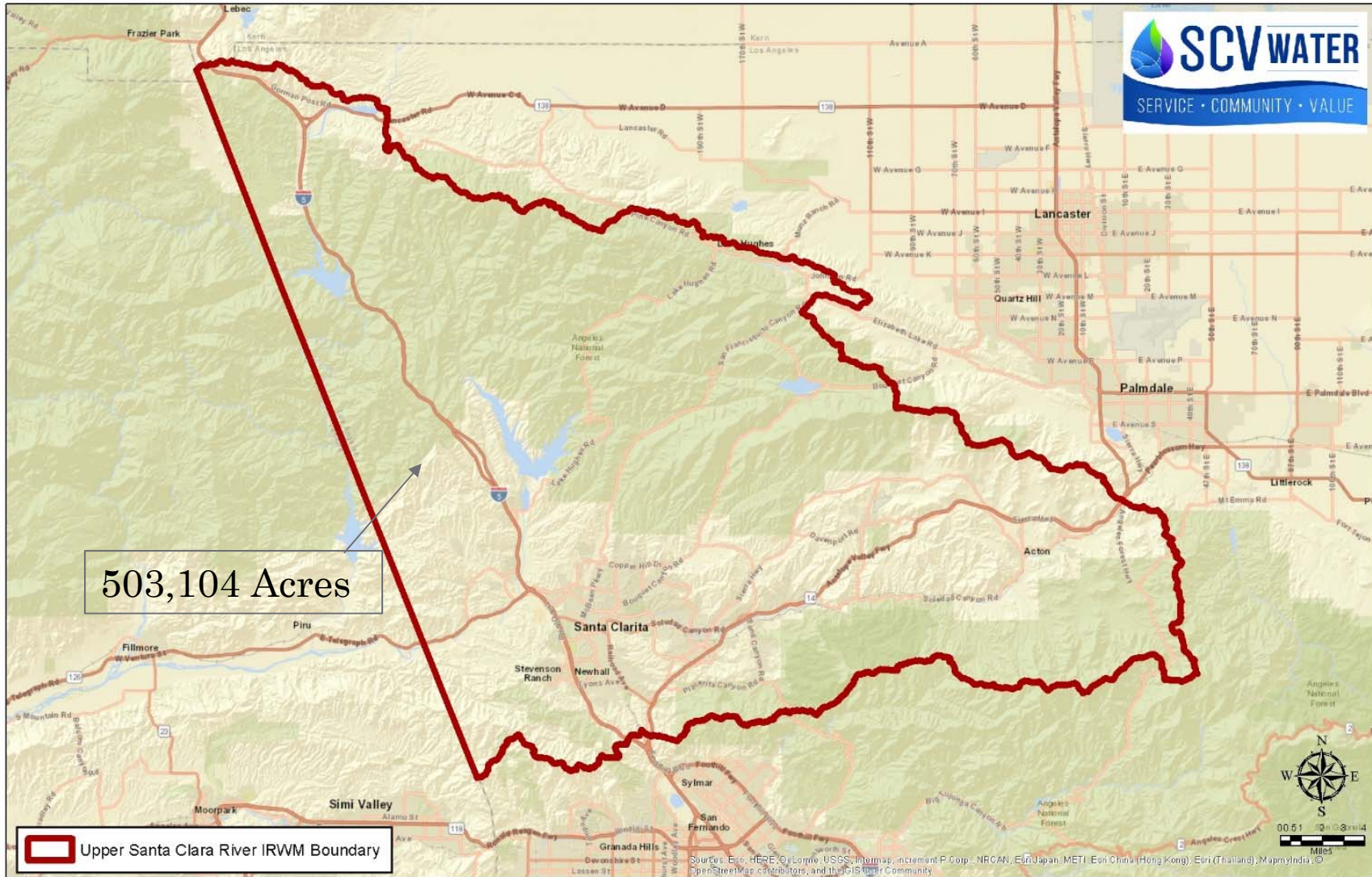
Groundwater Sustainability Agency and SCV-GSA

- Funding and Cost Considerations
 - Minimum member agency contributions of \$20K per year
 - Additional significant contributions by SCV Water
 - Grant revenue (Round 2 SGM~\$416K, Round 3 grant request submitted~\$890K)
 - SCV Water staff costs in 18/19 were approximately \$80,000*

Groundwater Sustainability Agency and SCV-GSA

- Approach for Projects
 - In GSP development, projects and management actions to achieve sustainability over the 20 year implementation horizon will be identified.
 - Projects limited to those that help achieve sustainability, i.e., groundwater recharge, etc.

USCR IRWM



Integrated Regional Water Management and USCR IRWM

- Governance/Authority
 - USCR IRWM Planning Area governance is through the Regional Water Management Group (formed by MOU).
Members: SCV Water, City of Santa Clarita, LA County Flood Control, Santa Clarita Valley Sanitation District, San Gabriel Rivers and Mountains Conservancy.
- Authority limited to Plan development and implementation.

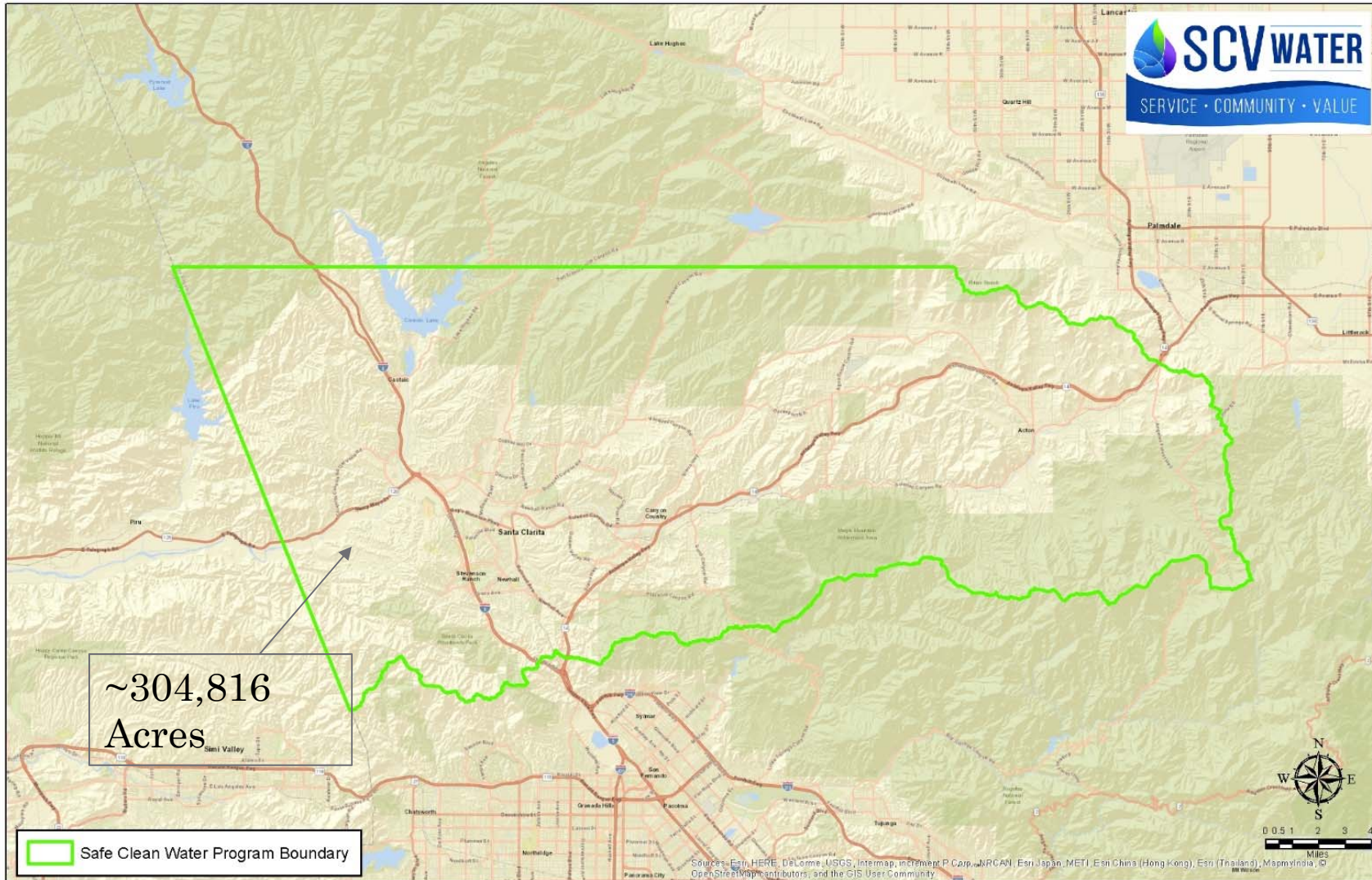
Integrated Regional Water Management and USCR IRWM

- Funding and Cost Considerations
 - Plan not required by law, but required for seeking certain grant funds.
 - SCV Water provides support by leading the program administration, providing the Chair, and providing contracting services.
 - City provides support as the PM for the DAC Involvement Program.
 - Member agencies provide funds on an ad hoc basis for plan updates and grant applications.

Integrated Regional Water Management and USCR IRWM

- Approach for Projects
 - Broadest approach exists within IRWM Planning. Local plan contains ~60 ideas. Without ongoing funding for all projects, focus is on projects fundable via grants.
 - Each grant cycle:
 - IRWM plan is reviewed for compliance with the state's current IRWM Plan standards
 - Projects reviewed for meeting grant requirements.
 - Then.... final selections are made and application prepared.

Watershed Area Steering Committee- Santa Clara River



Measure W

- Governance/Authority
 - WASC, Scoring Committee, Regional Oversight Committee
 - Each WASC has up to 17 members
 - 7 municipal, 5 agency, water agency/GSA, sanitation district, municipal parks/open space, 5 community stakeholder members.
 - SCV-GSA has a seat on this committee
 - Scoring Committee
 - Regional Oversight Committee

Measure W

- Authority includes ability for Los Angeles County assess and collect a special parcel tax, operate committees, review projects, and award funding.

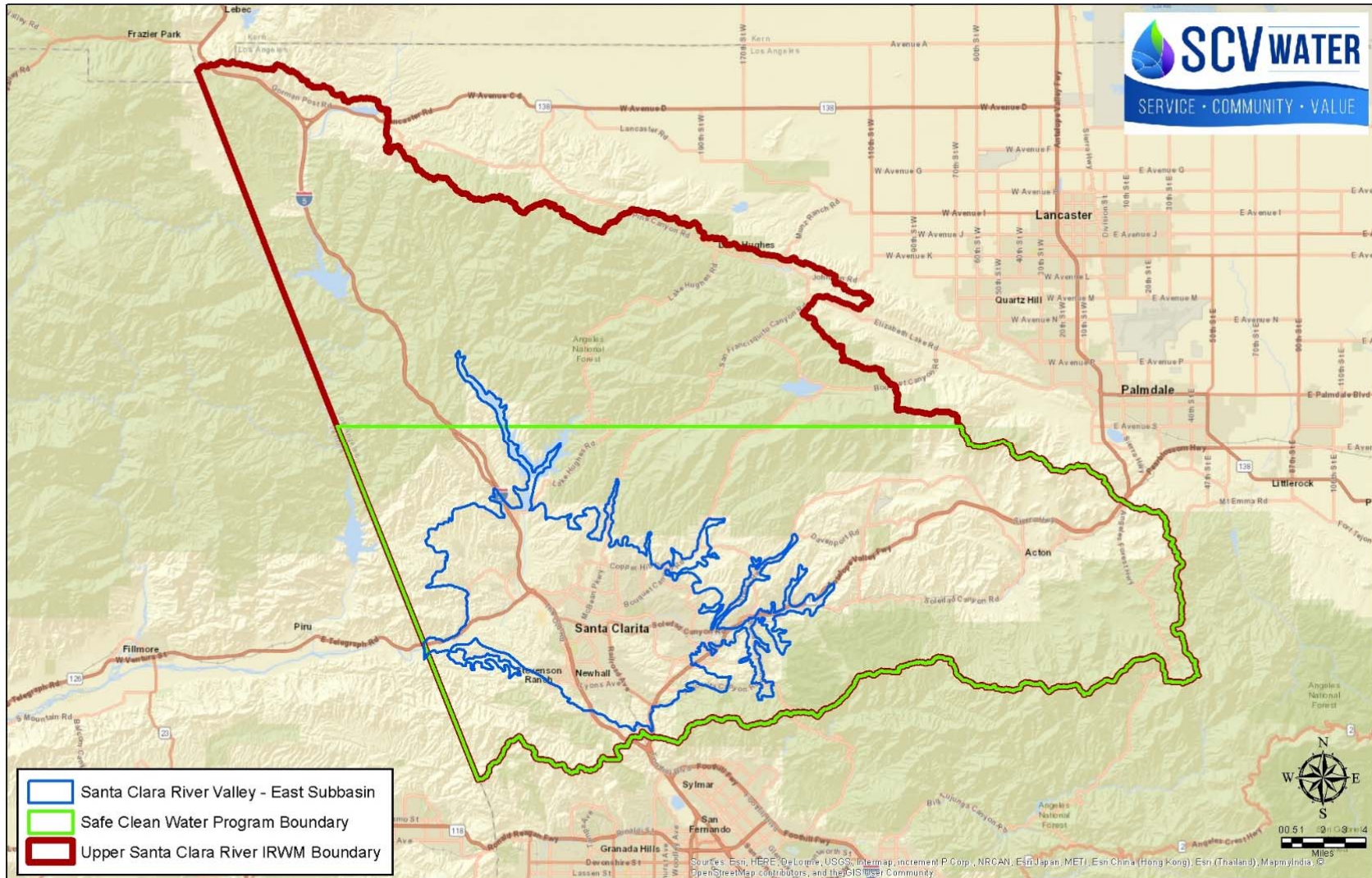
Measure W

- Funding and Cost Considerations
 - Local estimate of Regional Program revenue is \$6.0M, and Municipal is 3.3M.
 - Flood Control District-wide max estimated annual revenue is \$285M. Actual revenue anticipated to be somewhat less due to tax appeals and “credits”
 - 50% funds to Regional Program
 - 40% funds to Municipal Program
 - 10% funds to Flood Control District program

Measure W

- Approach for Projects
 - WASC's Stormwater Implementation Plan (SIP) is the building block of project identification and selection. Majority of SIP funding will be for stormwater compliance, but funds can be requested for technical resources and studies.
 - Final scoring of SIP projects is prepared by the Scoring Committee.

Program Area Geography



Potential Confusion of Programs

- Separate programs
 - different approaches to funding and governance
 - share same agencies and staff
 - share certain similar goals, ideas, and project types
 - Arundo removal, stormwater, etc.
- Can be confusing to stakeholders who want to better understand and engage in one or more program.

Ideas to Reduce Confusion

- SCV-GSA
 - Update at each meeting on IRWM/Measure W related matters so Board and Stakeholders can see shared ideas and options for partnering and participation.
- IRWM
 - Additional structure and funding for administration.
 - Broaden local effort and use as a clearinghouse for watershed wide (multi-agency) communication?



Questions/Discussion

SCV

GSA



Comparison Table

	GSA	IRWM	Measure W
Background/Local Considerations/ Service Area	2014. Regulation	2002. Creation of non regulatory program	2018. Special Tax and new program
Governance/ Authority	Joint Powers Authority/ Significant Authorities Available.	MOU- Regional Water Management Group/Authority Limited to Plan Development and Implementation	Several Committees overseen by County BoS/ Authority to collect and distribute tax revenue.

Comparison Table

	GSA	IRWM	Measure W
Funding and Cost Considerations	Member contributions, plus additional SCV Water contributions. Grant Revenue.	SCV Water funds administration and serves as Chair. DAC increased staff time. Member agencies fund ad hoc work	Parcel tax considered dependable revenue, but will fluctuate some SCV Water staff time currently low.
Approach for Projects (all include some component of stakeholder involvement)	Linked to GSP development.	Very broad, but filtered for grant opportunities	Linked to stormwater compliance